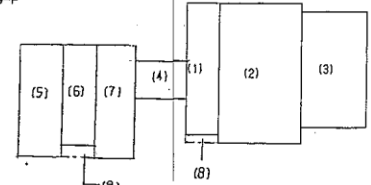
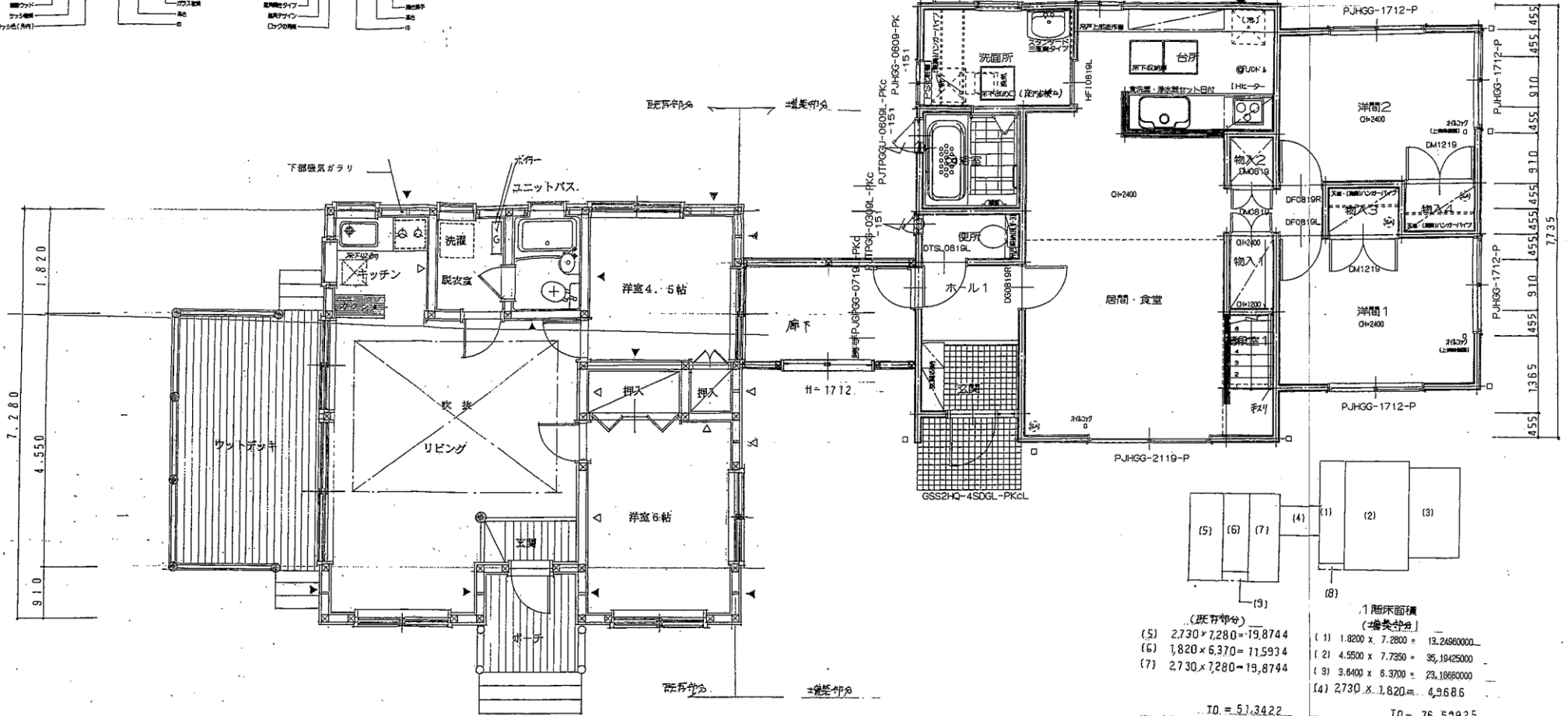
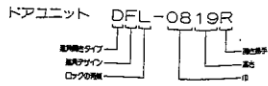


外部建具 (サッシ) 表示 (数字は呼称です)

■内部建具表示



(既存部分)

(5)	$2,730 \times 7,280 = 19,8744$
(6)	$1,820 \times 6,370 = 11,5934$
(7)	$2,730 \times 7,280 = 19,8744$

TO = 51,3422

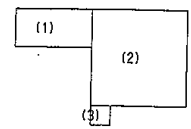
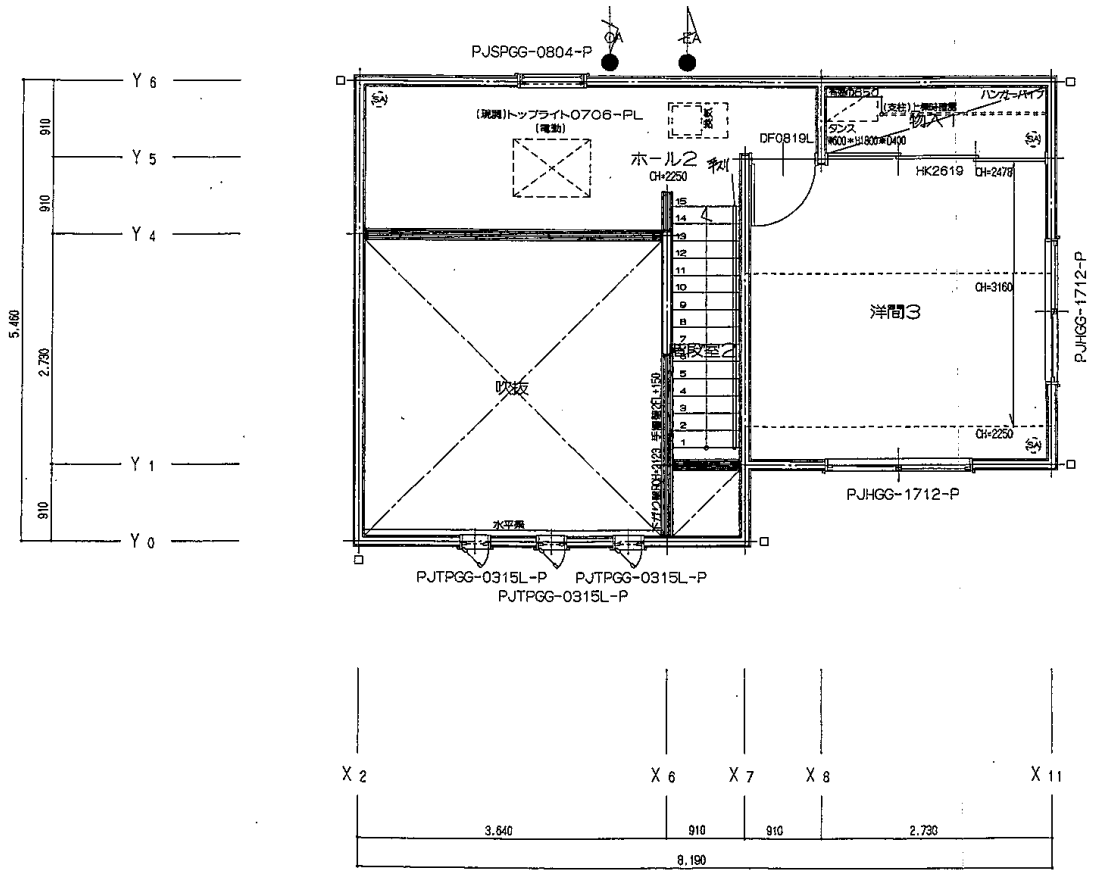
増築面積 (5)  $1,820 \times 0,910 = 1,6562$   
 (6)  $1,820 \times 0,910 = 1,6562$   
 (7)  $2,730 \times 0,910 = 2,4843$   
 TO = 51,3422 + 1,6562 = 52,9984

1 階床面積 (増築部分)

(1)	$1,820 \times 7,280 = 13,24960000$
(2)	$4,550 \times 7,730 = 35,19425000$
(3)	$3,640 \times 6,370 = 23,18680000$
(4)	$2,730 \times 1,820 = 4,9686$

TO = 76,59925

(8)  $1,820 \times 0,455 = 0,8281$   
 (9)  $1,820 \times 0,910 = 1,6562$   
 TO = 76,59925 + 0,8281 + 1,6562 = 79,08355



2階床面積

- (1) 3.640 x 1.8200 = 6.62480000
  - (2) 4.5500 x 4.5500 = 20.70250000
  - (3) 0.9100 x 0.9100 = 0.82810000
- TO 28.15540000 (m2)

床面積 (建築法令)

1F	76.59
2F	28.15
TO	104.74 (m2)